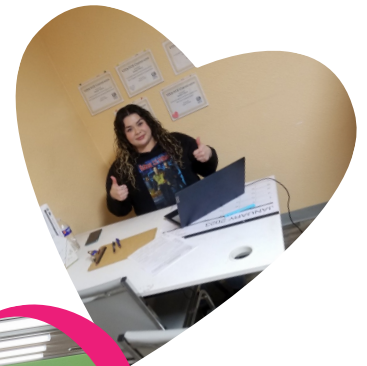


FEBRUARY 2023



LifeLine News

EMPOWERING UNDER-RESOURCED
NEIGHBORHOODS TO THRIVE



LOVED!

BY MONIKA GRASLEY

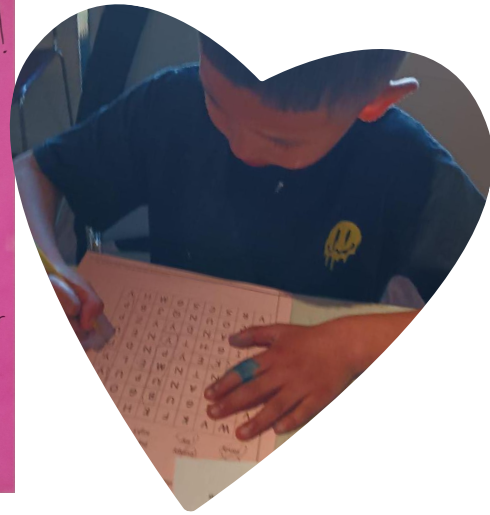
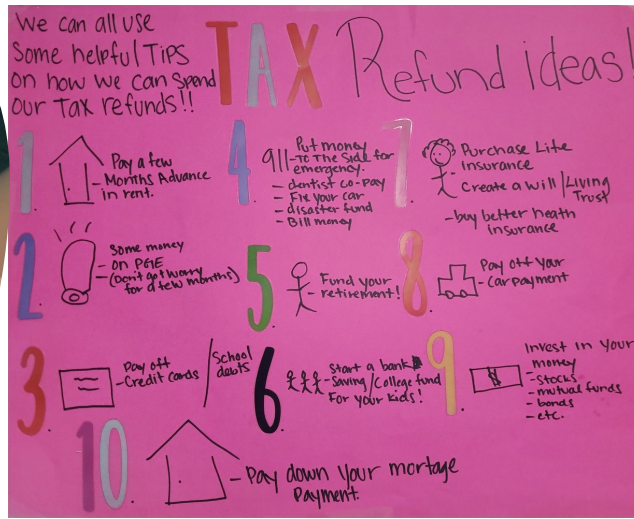
"Being deeply loved by someone gives us strength while loving someone gives us courage."

Jim and I celebrate our 36 wedding anniversary this year, and it has been a fantastic journey. We love the journey we are on and love the many people who have been part of that journey. BUT, I also realize that many families we work with daily do not have a story like this. Many have not felt deeply loved in a long time and have not loved in deep ways. Many live in such chaotic lives that the dream of a safe, caring relationship seems unattainable.

And yet, into that, we get to share opportunities, love the children, support their journey into maturity, listen to parents struggling to make ends meet and celebrate the successes of life. We get to speak truth into them, share the good news of God's love for them and live in a way that brings people closer to being loved and being loving.

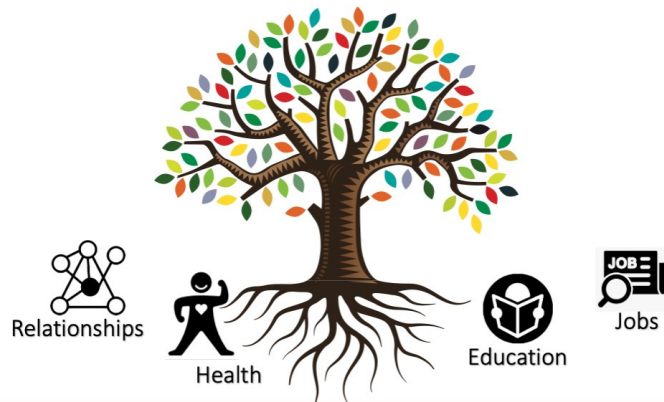
THANK YOU for making that possible. We know a picture says more than words - enjoy!





Want to help spread the love?

- Share your skills and gifts with our communities. Prepare to have your life changed!
- Join us on our **\$50/month challenge to cover one day in the life of LifeLine.**
- Pray for our work and our partnership with others.



Our communities are like a beautiful tree, full of possibilities and giftedness.

BUT if the root system is not strong and the soil is not healthy, the tree can never live up to its full potential. Together we love people, help create better root systems and improve the soil! Your partnership is making it possible to empower our communities to thrive, to move people out of poverty, to help people see their dignity and their God-given beauty.



You can give to LifeLine CDC via check:
 LifeLine CDC 731 E Yosemite Ave Ste B # 165, Merced CA 95340
 or via our Aplos link: <https://www.aplos.com/aws/give/LifeLineCDC>
 Want to learn more: 209-201-2905 or lifeline@lifelinecdc.org