

EMPOWERING IMPOVERISHED NEIGHBORHOODS TO THRIVE



Statistics 2021

- Our focus area: lower socio-economic neighborhoods in Merced County
- 93% of our community members live in poverty
- 7,626 people served (excluding children or our daily walk-ins)
- \$289,000 + given out in food resources
- Demographics: 43% Hispanic 32% Caucasian, 11% African American, 7% Asian, 2% Middle Eastern, 5% unknown
- LifeLine has 2 community centers, 8 employees and a budget of \$200,000
- We engage in a variety of community wide initiatives



Food Resources

- We served over 5,500 people with emergency food boxes
- Our community gardens feed families and provide educational opportunities
- Food pantries and People's Fridges to access free food
- "Eating healthy on a budget" classes and demos



Learning/Growing Opportunities

- Our computer labs are used daily by community members to receive help with resumes, job searches, computer classes etc.
- Our community centers are places for people to connect and help each other move forward and out of poverty



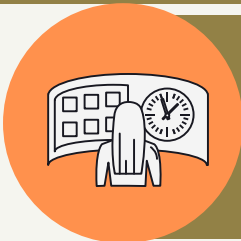
Child safety and education

- We cared for 15-20 children daily at the community center to help with homework, and create a safe, fun, learning environment
- We provided 120+ weekly packages for children to continue to keep their minds engaged
- We partnered with schools to provide school meals



Impact

- Community members rediscovering their strengths and moving forward to self sufficiency
- Safer living environments through community engagement
- Children & youth start dreaming about a future outside the bubble they have lived in
- Our VITA program brought over \$800,000 in tax refunds into the local community
- Our community centers were open at least 6hr/day M-F to engage with community members




Future

- We have seen an increase in poverty and homelessness in our seniors
- The increase in food and transportation costs have a big impact on our neighborhoods
- A mental/emotional fatigue is causing stress to all of us

Want to impact our shared future?

 lifelinecdc.org

 lifeline@lifelinecdc.org

 209-259-8950



Pictures:

- Kids' activities and homework, growing food
- C. getting her license
- R. earned a backpack during the summer
- Community Christmas
- Learning new skills
- PACT (Probation & Parole Team)
- Tutoring at Rivera Elementary School
- People's fridge
- Community Clean up
- Interactive workshop around justice issues

